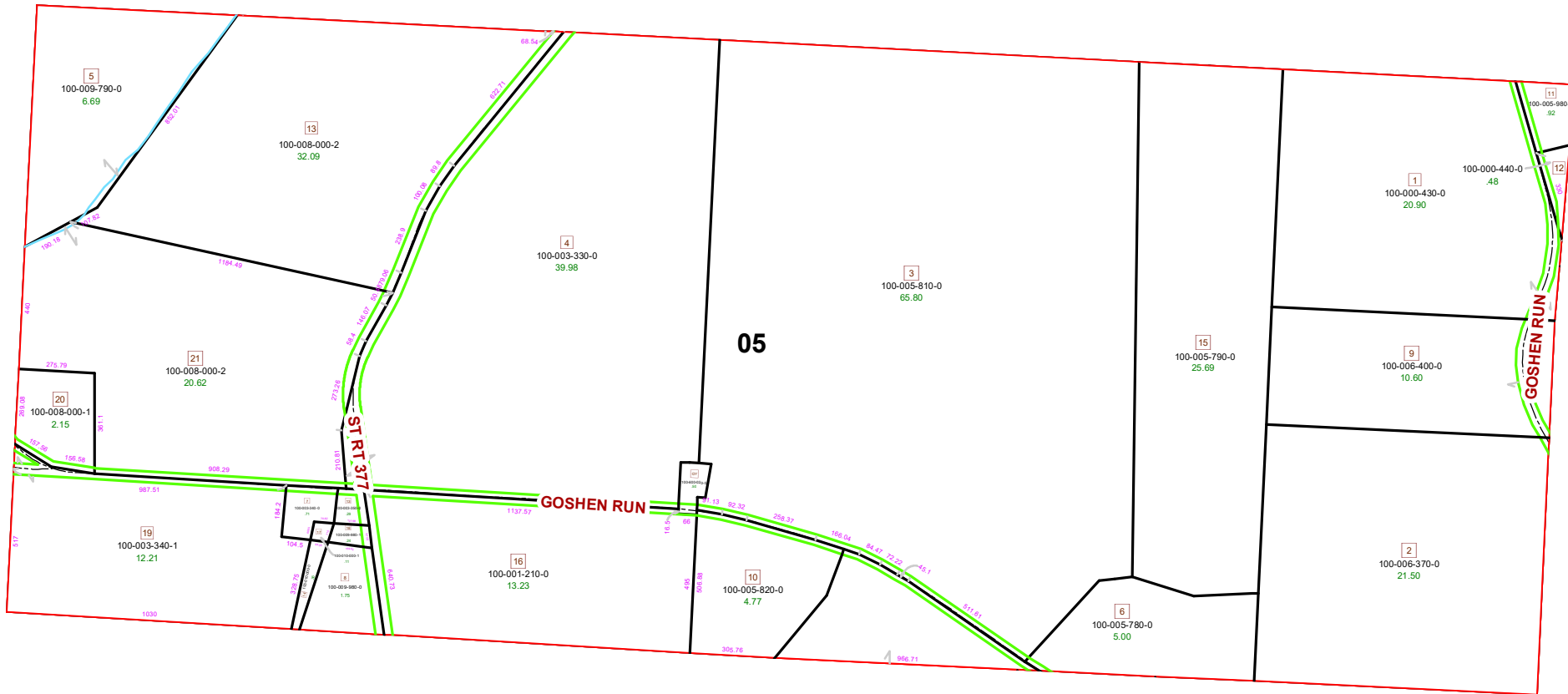
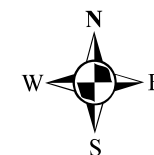


# MARION TOWNSHIP FRACTION 5 R12 TWP 8 MORGAN COUNTY, OH



PIN	Owner	VOL	PAGE	LegalDescr	Acres
100-600-020-0	CEMETERY (LOU PARKER) (ELLIS)			R12 T08 S05 0	0.5
100-000-430-0	CREIGHTON ANNA E	OR113	563	R12 T08 S00 FR 5 SD 1	20.9
100-008-000-0	GINGERICH LEVI	OR210	2502	R12 T08 S00 FR 5 SD 13	23.281
100-008-000-2	HERSHBERGER ERVIN J & RACHEL L	OR219	1148	R12 T08 S00 SD 21 FR 5 S	20.62
100-003-330-0	HODGSON WILLIAM SCOTT	OR233	3378	R12 T08 S00 FR 5 SD 4	39.98
100-009-790-0	JACKSON AARON & ADAM & ADESSA	OR190	236	R12 T08 S00 RICHARDSO	6.69
100-008-000-1	KITTLE DESLAR M & MELISSA A	D.V 201	379	R12 T08 S00 FR 5 SD 20 S	2.158
100-009-980-1	LESCODY STEVEN W & KATINA M	OR207	1380	R12 T08 S00 SD 18 FR 5	0.244
100-010-000-1	LESCODY STEVEN W & KATINA M	OR207	1380	R12 T08 S00 SD 17 FR 5	0.11
100-003-350-0	LESCODY STEVEN W & KATINA M	OR207	1380	R12 T08 S00 FR 5 SD 13	0.29
100-003-340-0	LESCODY STEVEN W & KATINA M	OR207	1380	R12 T08 S00 FR 5 SD 7	0.714
100-005-780-0	MOODY SUSAN ANN	D.V 164	553	R12 T08 S00 FR 5 SD 6	5
100-005-820-0	MOODY SUSAN ANN	D.V 164	553	R12 T08 S00 FR 5 SD 10	4.77
100-001-210-0	MOODY SUSAN ANN	OR77	317	R12 T08 S00 FR 5 SD 16	13.23
100-000-440-0	MOODY SUSAN ANN	OR175	1	R12 T08 S00 FR 5 SD 12	0.483
100-005-810-0	MOODY SUSAN ANN	OR77	317	R12 T08 S00 FR 5 SD 3	65.8
100-005-770-0	MOODY SUSAN ANN	OR77	317	R12 T08 S00 FR 4 SD 3	35.34
100-005-790-0	MOODY SUSAN ANN	D.V 164	553	R12 T08 S00 FR 5 SD 15	25.69
100-005-980-0	MUETZEL ROBERT N ET 2 AL	D.V 157	763	R12 T08 S00 FR 5 SD 11	0.92
100-006-370-0	OLNEY ALLEN	D.V 188	299	R12 T08 S00 FR 5 SD 2	21.5
100-006-400-0	OLNEY ALLEN	D.V 188	299	R12 T08 S00 FR 5 SD 9	10.6
100-009-980-0	POOL LYNDELL	OR222	2170	R12 T08 S00 FR 5 SD 8	1.756
100-010-000-0	POOL LYNDELL	OR222	2170	R12 T08 S00 FR 5 SD 14	0.36
100-003-340-1	POOL LYNDELL	OR222	2170	R12 T08 S00 SD 19 FR 5	12.212



Boundaries	
----- Hidden	--- ROW
----- Hydro	--- Section
----- Roads	--- Township
----- County	--- Parcel
----- Lot	--- Parcels



Disclaimer: The information that these maps contains is for reference purposes only. Please bring any errors to the attention of the Engineer's Office staff.

Thank you

Source: Morgan County Engineer's Office  
 Author: Marcia Wolfe  
 Date: 7/1/2020

